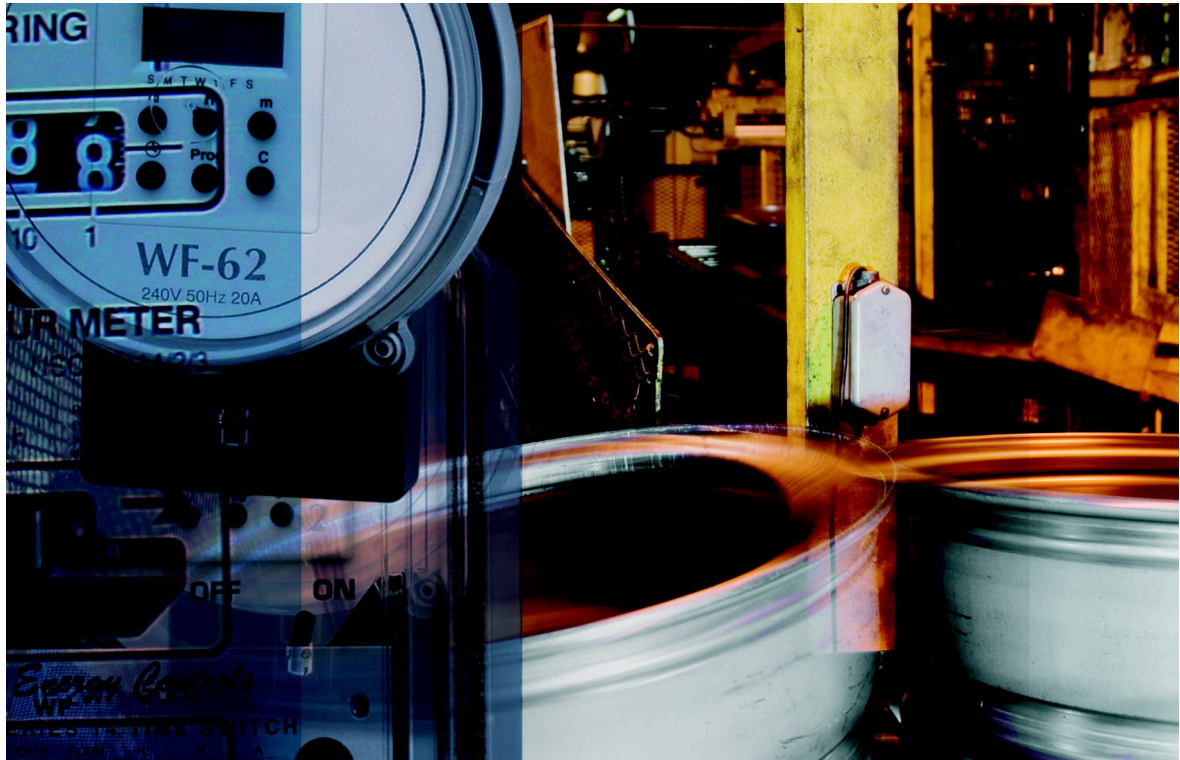


Time Switches & Timers



Time Switches

**SALES**

T:1300 665 374  
F:1300 665 394  
E: [sales@wfenergycontrols.com.au](mailto:sales@wfenergycontrols.com.au)

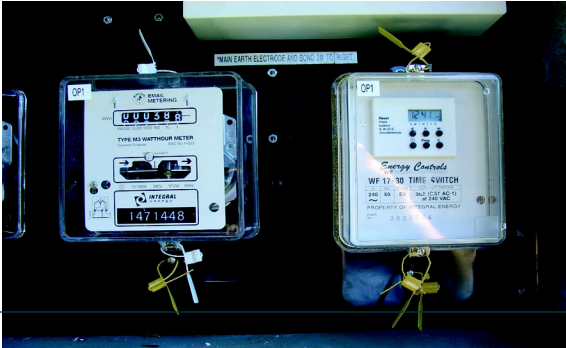
**TECHNICAL**

T: 1300 665 374  
F: 1300 665 394  
E: [info@wfenergycontrols.com.au](mailto:info@wfenergycontrols.com.au)

**ADDRESS**

Unit 28, 38-46 South St  
Rydalmere NSW 2116  
Australia

## Full current load control



The Heavy Duty Load Control Digital Time Switches are manufactured in rated currents of 20A, 30A and 50A. They have a single pole N/O contact, with the exception of the 50A unit which is also available with 2 x N/O contacts. The ratings are resistive. These time switches are typically used by Power Utilities for full load, off peak switching of domestic hot water, underfloor heating etc.

They can be used in any application where high accuracy full load switching is required. Back-up operation is provided on power failure to maintain switch timing.

#### Model WF62 20A – 1 Channel

- Operating voltage range of 216 to 264V AC
- Mains frequency range of 45Hz to 55Hz
- Power consumption: Approx. 2.4 watts
- Operating Temperature Range: -10C to +50C
- Relay Type: Electro-Mechanical
- Contact Arrangement: Single Pole normally open
- Contact Material: Silver Alloy
- Switching Capacity @ 240V AC: 25A resistive
- Relay Life Expectancy: 100,000 operations at full load
- Back-Up storage device: Super-capacitor
- Reserve Capacity: 8 days
- Display Type: Liquid Crystal
- Clock Accuracy: Within +/- 0.1667 secs per day
- Up to 10 'ON' and 'OFF' switching functions per day
- 24 hour or 7 day programmable
- Over voltage and over current protection circuits
- Plug-In housing
- Timer Mechanism (Plug-In section) may be used as a replacement for the older electro mechanical time clocks

#### Model WF17 30A – 1 Channel

- Operating voltage range of 216 to 264V AC
- Mains frequency range of 45Hz to 55Hz
- Power consumption: Approx. 2.4 watts
- Operating Temperature Range: -10C to +50C
- Relay Type: Electro-Mechanical
- Contact Arrangement: Single Pole normally open
- Contact Material: Silver Alloy
- Switching Capacity @ 240V AC: 30A resistive
- Relay Life Expectancy: 100,000 operations at full load
- Back-Up storage device: Supercap
- Reserve Capacity: Typically 8 days
- Display Type: Liquid Crystal
- Clock Accuracy: Within +/- 0.1667 secs per day
- Up to 10 'ON' and six 'OFF' switching functions per day
- 24 hour or 7 day programmable
- Over voltage and over current protection circuits
- Choice of bottom connect (4 terminal) or plug in

